

GW1-12G(D)

Scope use and feature

GW1-12G(D) series outdoor high voltage isolator is suitable for outdoor 12kV distribution line under condition of with voltage but no load. With CS□ type manual operation device, it can prevent closing malfunction of live earthed line. No need to put another earthing line to the distribution line for operators. Pollution-proof type isolator can satisfy customer in heavy polluted region. It's shed has self-cleaning characteristic during operation.

Environment of application

1. Altitude above sea level: ≤ 2000m
2. Temperature: -40~40℃ with wind speed ≤ 35m/s
3. Earthquake intensity ≤ 8 degrees
4. Working location shall be free from frequent violent vibration
5. Installation site of ordinary type isolator should be kept away from gas, smoke chemical deposition, salt-spray fog, dust and other explosive and corrosive matters that affect seriously insulation and conduction capability of the isolator.
6. Pollution-proof type isolator is applicable to severe polluted region. However, there shouldn't be any explosive matters and matters that causing fires.

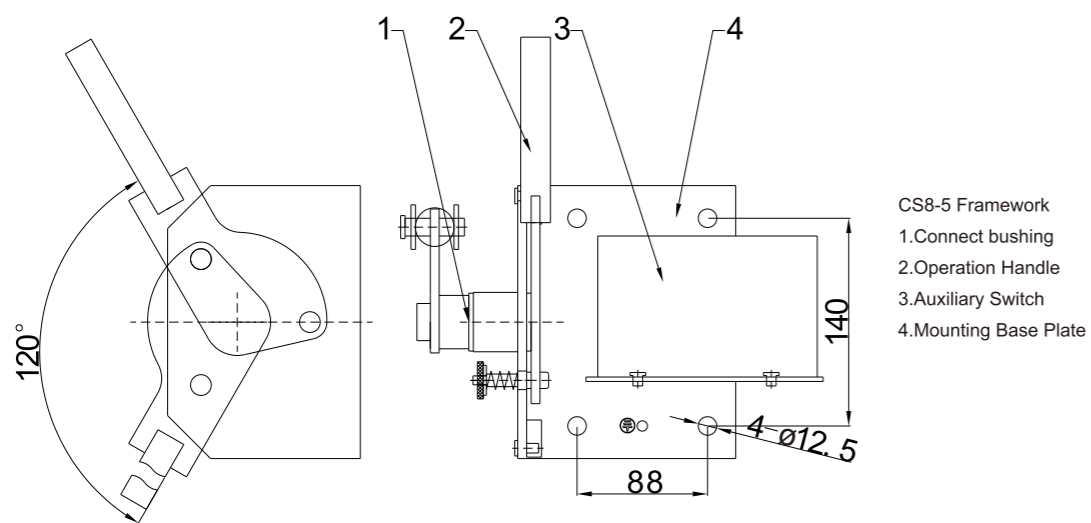
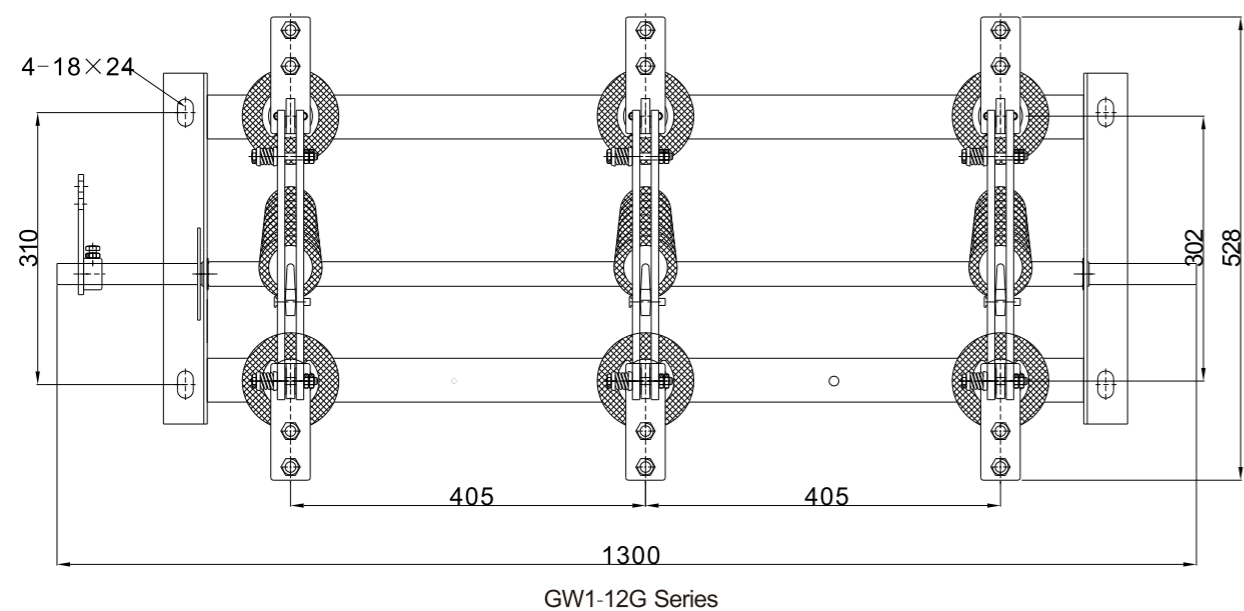
GW1 Type Isolator - Key Technical Parameters

Description		Unit	Guaranteed Technical Parameter			
Rated voltage		kV	10	15	20	
Max. operating voltage		kV	12	17.5	24	
Rated insulation level	1min.Power frequency withstand voltage	To earth	kV	38	42	50
		Across fracture	kV	42	48	60
	Rated lightning impulse withstand voltage	To earth	kV	75	105	125
		Across fracture	kV	85	120	145
Rated frequency		Hz	50			
Rated current		A	200	400	630	1250
4s short duration withstand current		kA	6.3	12.5	20	31.5
Dynamic stable withstand current (Peak)		kA	16	31.5	50	80
Mechanism			CS8-1, CS8-D, CD8-5 Anti-rain type manual mechanism Or CX6 Motor drive mechanism			

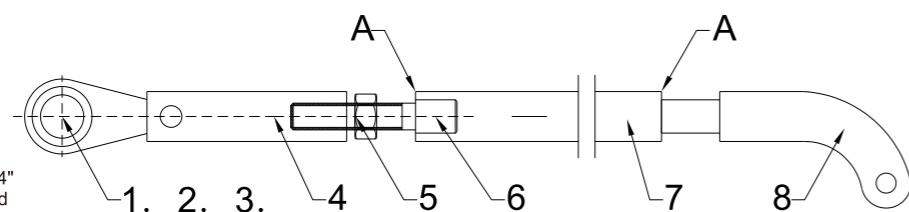
HGW1 Type Isolator - Key Technical Parameters

Description		Unit	Guaranteed Technical Parameter			
Rated voltage		kV	12	24	33	
Max. operating voltage		kV	15	27	35	
Rated insulation level	1min.Power frequency withstand voltage	To earth	kV	40	50	80
		Across fracture	kV	47	60	90
	Rated lightning impulse withstand voltage	To earth	kV	105	125	180
		Across fracture	kV	120	145	210
Rated frequency		Hz	50			
Rated current		A	200	400	630	1250
4s short duration withstand current		kA	6.3	12.5	20	31.5
Dynamic stable withstand current (Peak)		kA	16	31.5	50	80
Mechanism			CS8-1, CS8-D, CD8-5 Anti-rain type manual mechanism Or CX6 Motor drive mechanism			

Overall and installation dimension

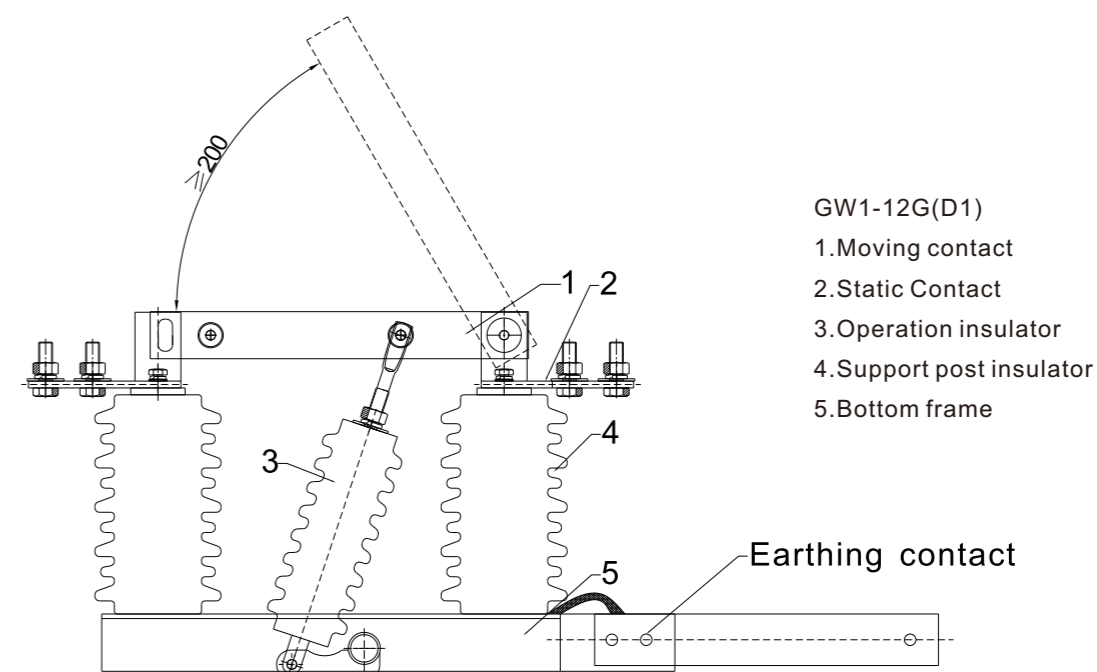
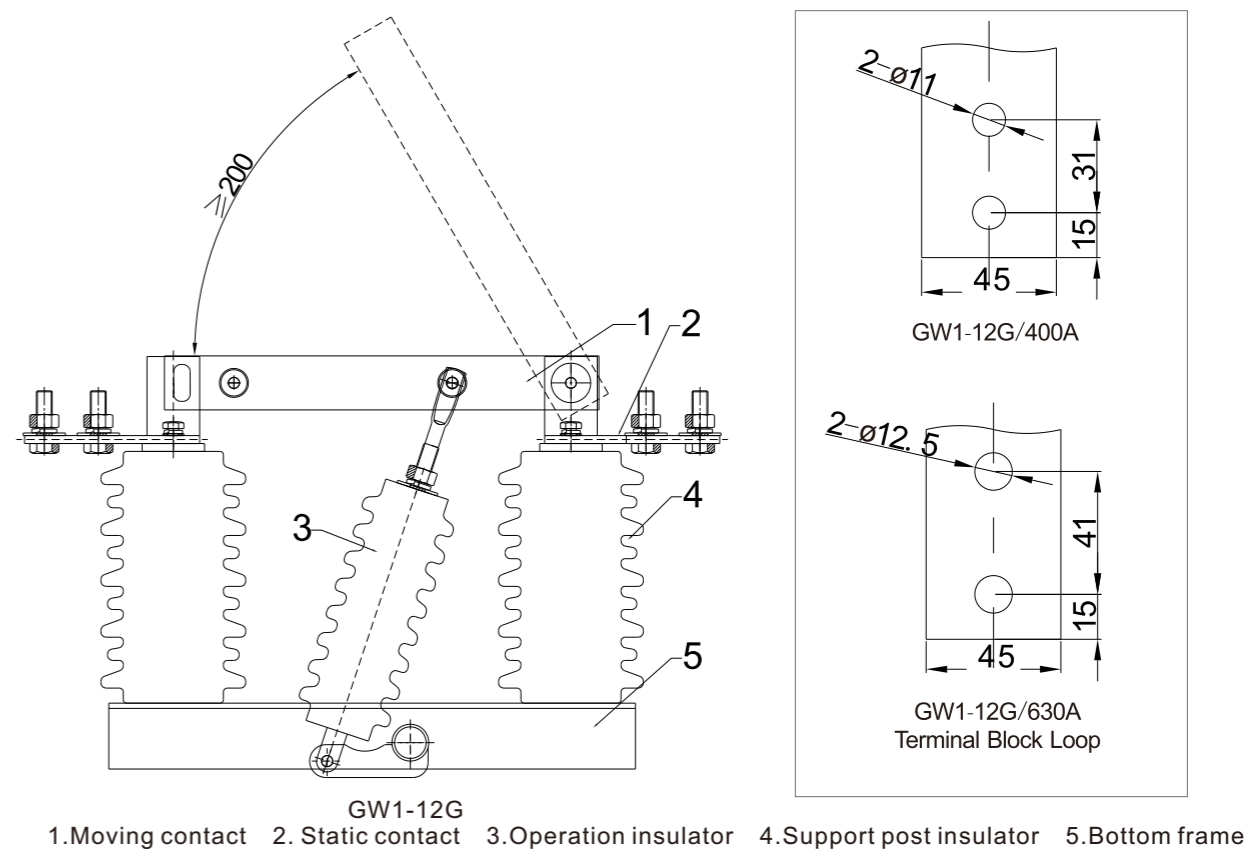


1. Spindle $\phi 12$
2. Washer $\phi 12$
3. Open bolt 4 25
4. Bend coupling
5. Nut M16
6. Pole
7. Water gas pipe 3/4"
8. Connect pole head



model number	A	B	C
GW1-12G/400A	510	555	18×24=4
GW1-12G/630A	530	555	

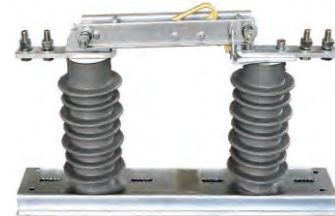
Overall and installation dimension





WYJ-01

Rated Voltage (kV)	Rated current (A)	4S Heat steady current(kA)	Shock steady current(kA)	Impulse withstand voltage		Power-frequency withstand voltage(kV)	
				To earth	Across the isolating distance	To earth	Across the isolating distance
12	400	12.5	31.5	75	85	38	42
	630	12.5	31.5	75	85	38	42
	1250	20	50	75	85	38	42



WYJ-02

Rated Voltage (kV)	Rated current (A)	4S Heat steady current(A)	Shock steady current(A)	Impulse withstand voltage		Power-frequency withstand voltage(kV)	
				To earth	Across the isolating distance	To earth	Across the isolating distance
12	400	12.500	31.500	75	85	38	42
	630	12.500	31.500	75	85	38	42
	1250	20000	50000	75	85	38	42



WYJ-03

Rated Voltage (kV)	Rated current (A)	10-sec Heat stabilization Current(A)	Limit Passing Current	
			Reak value	r.m.s
10 12 15	400	10	21	15
	600	14	35	25
	1000	20	50	35



WYJ-04

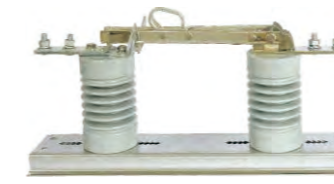
Rated Voltage (kV)	Rated current (A)	10s heat steady current	Limit by current	
			Peak	r.m.s
12	200	9	5	9
	400	10	21	15
	630	14	35	25



WYJ-05

Rated Voltage (kV)	Rated current (A)	Rated Frequency	Rated Sort-time withstand current(kA/4s)	Rated peak withstand current(kA)	Power-frequency withstand (1min)
					PE/Fracture 42/49
12	400	50	20	50	PE/Fracture 42/49
	630	50	20	50	
	800	50	20	50	

Isolator



WYJ-06

Rated Voltage (kV)	Rated current (A)	4 seconds of thermal stable current(kA)	Dynamic stable current (peak)kA	1min power frequency withstand voltage(RMS)		Lightning impulse withstand voltage(peak)	
				To earth	Fracture	To earth	Fracture
10 12 15	400	12.5	31.5	40	47	105	120
	630	20	50	40	47	105	120
	1250	31.5	80	40	47	105	120



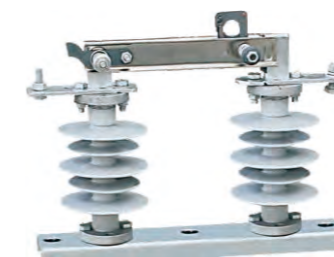
WYJ-07

Rated Voltage (kV)	Rated current (A)	4 seconds of thermal stable current(kA)	Dynamic stable current (peak)kA	1min power frequency withstand voltage(RMS)		Lightning impulse withstand voltage(peak)	
				To earth	Fracture	To earth	Fracture
10 12 15	400	12.5	31.5	40	47	105	120
	630	20	50	40	47	105	120
	1250	31.5	80	40	47	105	120



WYJ-08

Rated Voltage (kV)	Rated current (A)	Rated Frequency	Rated Sort-time withstand current(kA/4s)	Rated peak withstand current(kA)	Power-frequency withstand (1min)
					PE/Fracture 42/49
12	400	50	20	50	PE/Fracture 42/49
	630	50	20	50	
	800	50	20	50	



WYJ-09

Rated Voltage (kV)	Rated current (A)	10s heat steady current	Limit by current	
			Peak	r.m.s
12	200	9	5	9
	400	10	21	15
	630	14	35	25



WYJ-10

Rated Voltage (kV)	Rated current (A)	10-sec Heat stabilization Current(A)	Limit Passing Current	
			Reak value	r.m.s
10 12 15	400	10	21	15
	600	14	35	25
	1000	20	50	35